

MTe - MONITORS FOR MARINE APPLICATIONS

The first generation of MT marine monitors was developed in 2004. From this time, the product technology has constantly improved. Today the Lauer marine monitor range is equipped with “enhanced” functionality. The video signal transmission can be realized via USB or LAN interface. Additionally, seamless backlight dimming from 0 to 100% is possible.

The MTe monitor range has been developed for automation applications on bridges, motor control rooms and different other PC-based applications on vessels and offshore environments. Three different display sizes between 15 and 19” are available.

The “e” stands for “enhanced”

Compared with an ordinary monitor which receive its video signal via VGA or DVI cable, the MTe series offers two alternative opportunities; transmission of the video signal via USB or LAN.

The result is an open network structure with connection of up to 8 different monitors without any VGA or DVI

converter. It is possible to use an existing LAN to save inflexible VGA-cabling and expensive multimode graphic cards.

Dimming in several ways

At bridges it is mandatory to use a dimming functionality for all back-lighted devices. MTe displays can be dimmed infinitely variable to 0% brightness, which ensures a non-dazzling control for the crew.

There are several ways to adjust the display brightness. One way is to adjust dimming for every monitor individually, using the front buttons. But in some cases it might be useful, to dim the whole range of monitors at once. For this case the Remote Dimming feature allows building local networks of connected monitors where any monitor can control the backlight brightness of any other.

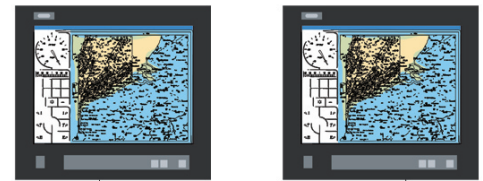
If the Remote Control feature of a single monitor is not enabled, this monitor cannot control other monitors, but may still be controlled by other monitors. This feature is realized with a serial protocol, which is called “SCOM” and originally developed by Hatteland. This way, network dimming can

be realized easily without additional equipment.

There are several ways of remote dimming available :

Point-to-Point

Two monitors can control each other, if they are connected via RS232.

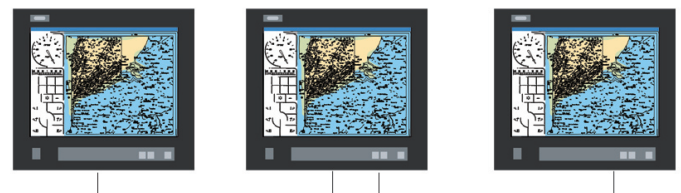


RS232

Multiple Monitors

More than two monitors can be connected and control each other via an RS485 bus.

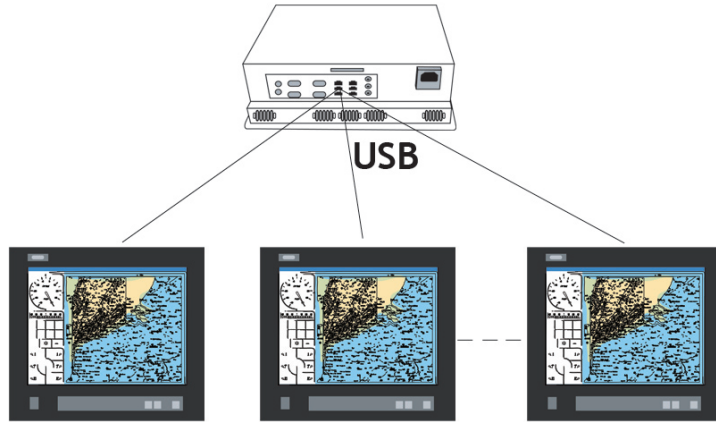
Other remote dimming features are available via USB or Ethernet connection with the Lauer RBC Router. The RBC Router is a service that handles SCOM commands. It is a part of the Monitor Control Center.



RS485

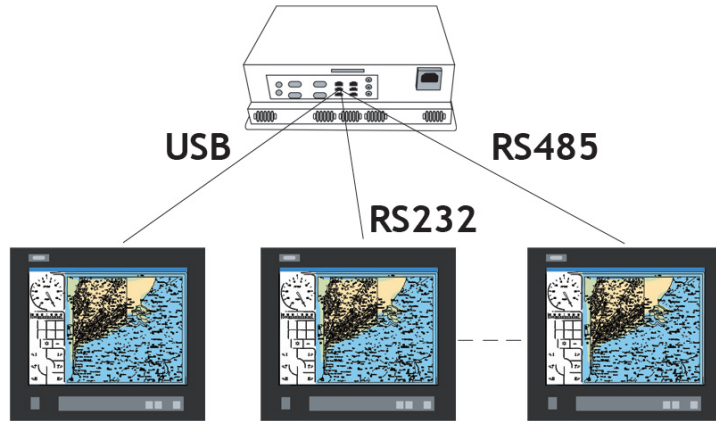
USB Network

Several monitors can control each other if they have a USB connection to the same PC. To enable this feature, the RBC Router must run on the PC, and USB output must be enabled.



Local Universal Network

Several monitors can control each other if they have any of the supported connections RS232, RS485 or USB to the same PC. To enable this feature, the RBC Router must run on the PC, and RS232 output, RS485 output or USB output must be enabled.



Global Universal Network

Several monitors in different local networks can control each other if they are connected via Ethernet, RS232 (only two PCs

per connection) or RS485. To enable this feature, the RBC Router must run on every PC, and RS232 output, RS485 output,

USB output and Ethernet input must be enabled.

